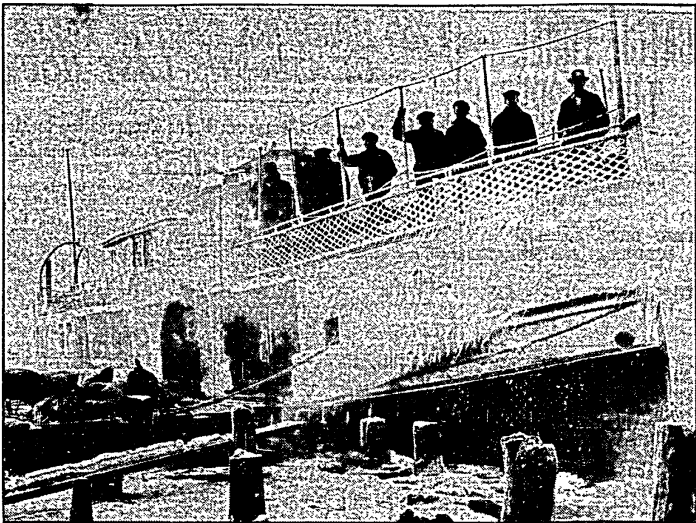


DEFYING WINTER PERILS ON LAKE SUPERIOR



FISHING STEAMER L. GOLDISH AND INTREPID CREW

More than two months after the close of navigation on Lake Superior, the little fishing steamer, L. Goldish, formerly the Crescent, wearing a continual coating of ice, is still plying valiantly along the north shore as far as Grand Marais.

The Goldish is succeeding well in her fight against rough weather, but fishermen from whom she takes her cargoes are less fortunate. So the little steamer has been delayed on her latest trip and will not put into port until about 11 a. m. today. She will have a full cargo of 31 tons of fish.

Delay in the Goldish's schedule is due to inability of north shore fishermen to put out from shore with their catches. Their skiffs are not sufficiently seaworthy to withstand the buffeting of the waves, and the fishing steamer has had to wait to meet them.

"The Goldish will make one more trip," said S. Goldish, manager of the Lake Superior Fish company, last night. It may take only three days or until the first of next month, depending on the weather. The present trip has required six days. We tied up for the season just a year ago

today, but the lake is still clear of ice and our only trouble is in navigating the harbor, where the Goldish has been forced to break through thick ice.

Aside from chills and occasional frostbites, the crew of the Goldish is having no trouble. The steamer carries Capt. Ed Haasen and two men. The Goldish is 65 feet long and has a 15-foot beam. The engine is 55 horse power.

The steamer America of the Booth line was the last boat of size to tie up last year. She put into port until spring, Dec. 12.